

V I S U A L I Z E , I N N O V A T E & T R A N S F O R M

# Holistic Data System

M A N U F A C T U R I N G S O F T W A R E

# HMC

Phone: 1-800-545-6044

[www.holisticconsulting.org](http://www.holisticconsulting.org)

**The Holistic Data Systems (HDS) is a powerful and user-friendly manufacturing software system**

that is designed to help companies increase efficiencies and sustain improvements in production. The software acts as a motivational and diagnostic tool that can be used at every level of your organization—from shop-floor operators and their supervisors to the top executive who wants to keep a pulse on production.

The flexibility of the HDS software allows for easy customization for your specific needs, and the network-based environment works in real time to track and analyze production performance—every hour, on the hour.

The extensive data analysis feature, which provides graphs and charts with multi-parameter capabilities, is key for pinpointing short-term and long-term performance trends—both positive and negative. This allows you to gain a better understanding of what factors are limiting or facilitating your production performance.

The statistical data that HDS provides will help you take your company to the next level—because information is power! You will no longer have to guess why you are succeeding or failing—finally, you'll have the data to back up your intuition.

The HDS Software System was created by Holistic Manufacturing Consulting (HMC), which is a global consulting firm that specializes in the manufacturing sector. HMC's formula for success in providing sustainable results for their clients is based on using their proven, trademarked methodology, Holistic Manufacturing™. This approach focuses only on statistically significant data in order to diagnose existing problems, which then allows them to recommend the appropriate solutions necessary to achieve sustainable improvements. This process allows them to bridge the gap between good performance and average performance by identifying the primary variables that need to be controlled to achieve higher performance on a more consistent basis.

HMC has taken their revolutionary methodology a step further by creating the Holistic Data System (HDS). This software system was designed to help companies increase efficiencies and sustain improvements in production.

**“Our revolutionary data system rapidly moves companies from fire fighting to real sustainable improvements in a matter of weeks—this will change the way manufacturers do business in the 21st century.”**

**-Steve Hardy, President, HMC**

## HDS Overview

**HDS** is a highly visual system that can easily be configured to a number of parameters including shifts, crews, standard work week, time measurement intervals, trigger levels, brands, stop codes, etc. Our software overcomes many of the weaknesses of traditional shop-floor data collection systems that use either manual-only entry or PLC data collection.

HDS provides real-time information, comparing performance at regular time intervals with historic performance for each production module. Each hour is a new hour, so operators are motivated to reach short-term performance targets throughout their shift (in most cases hourly). The graphic display makes it easy to recognize trends in production so proactive measures can be taken **before** a major problem occurs. Management can monitor production and gain a better understanding of what factors are limiting or facilitating operator and maintenance performance.

**For more information on the HDS software or to receive a demo CD showing the software in action, send an email to [hdsinfo@h-m-c.com](mailto:hdsinfo@h-m-c.com) or call 1-800-545-6044.**

## Features of the HDS Software:

- Flexible network-based system.
- Provides real-time data.
- Scalable system that can be customized for a single line, single product or for multi-lines and multi-factories—with several machines running different products.
- Customizable software that can be configured to the ever-changing format of product lines.
- Front screen that displays short-term trends.
- Trigger line feature with exceptional-cause variation, requiring reason code when below trigger level.
- Displays statistically significant variation.
- Displays top three significant machine stops for definable period by frequency and duration.
- Simple message writer function for sending messages to specific crews, shifts, production lines, or operators.
- Customizable data analysis charts and graphs for above- and below-target performance.
- Flexible standard reporting by function, brand, crew, shift, machine type, or period.
- Multi-language capabilities.
- Touchscreen and menu-driven functionality with initiative, easy-to-use interface.
- Direct interface with PLC system (optional).

## Benefits of the HDS Software:

- Monitoring ease lets operators, maintenance personnel, supervisors, and managers check production and performance at a glance.
- Consistent feedback helps operators pace themselves throughout the shift.
- Constant display of the most critical information allows problems to be pinpointed as they are happening.
- Immediate feedback motivates employees to determine why problems are occurring.
- Encourages a preventive maintenance mindset that involves human systems.
- Trigger line feature acts as a filter so that employees can focus on major problems impacting performance.
- Easily configurable as line formats change.
- Data on above-target performance allows managers to see the specific actions that are having a positive effect on production so that these actions can then be replicated.
- Data provided to compare performance at regular time intervals—with historic performance for each production module—highlights improvement opportunities.
- Simple message writer function is easier to use than Lotus notes and does not require knowing who is on the crew or shift.
- Analysis identifies trends in production so that proactive measures can be taken before major problems occur.
- Scalable system allows for easy expansion to other divisions and factories.



## The Three Basic Operating Modes of HDS

The software on each licensed module can be run in one of the following three modes:

**Manual – hourly production data is entered each hour manually.**

This is a great mode to start with. It requires operators to enter the key performance measure at the end of every period, so this could typically be the production for the last hour. If the number is below the trigger (typically would be initially set at 1 standard deviation), then they are required to enter a reason code.



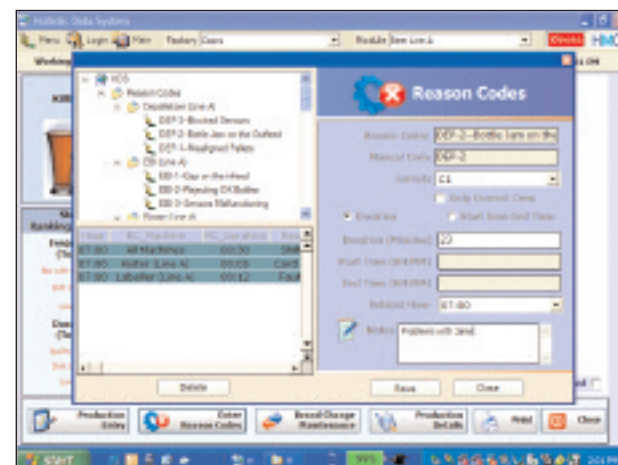
Note: The license allows the user to operate in any of the above modes on each module for which they hold a license. The mode can be changed at any time for any module.

**Automatic – production and/or reject hourly data is taken from a counter system.**

In this mode, the periodic data is loaded into the system automatically from a PLC or some sensor such as a photo eye.

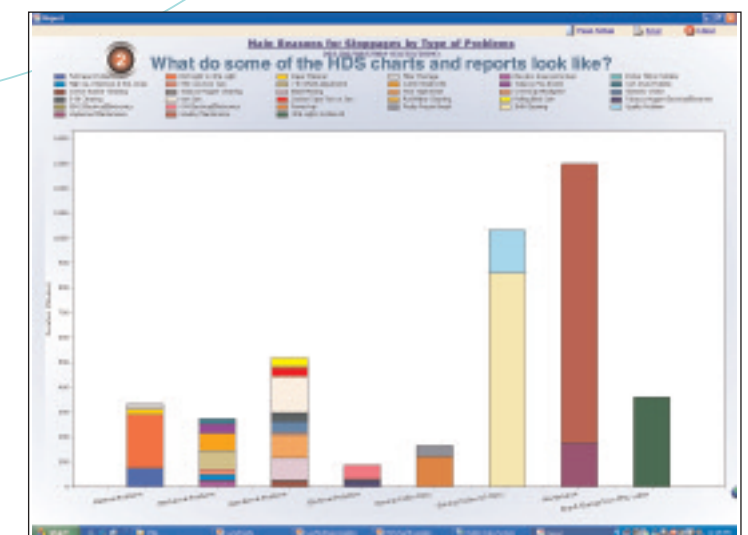
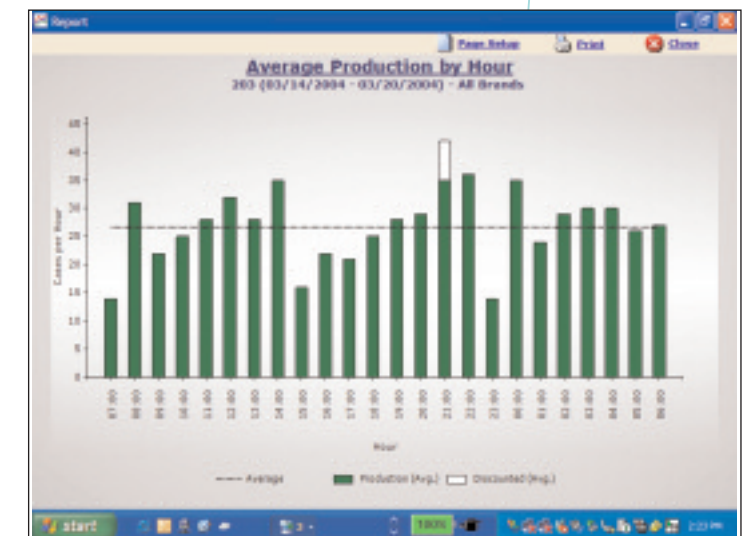
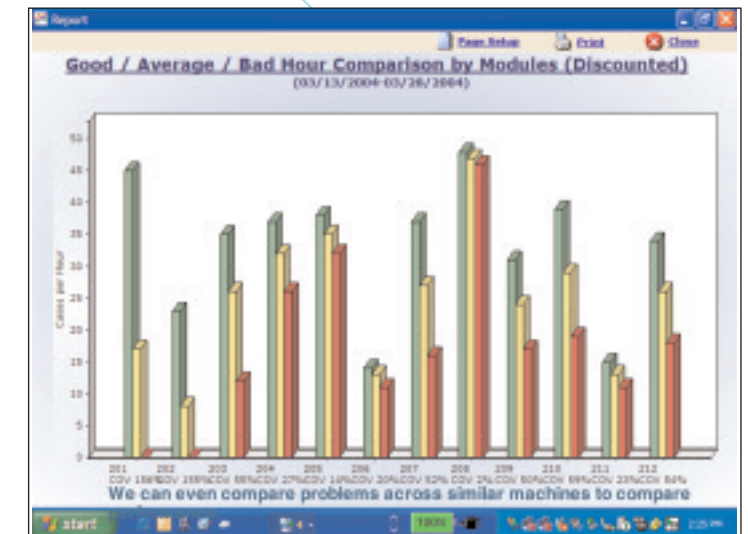
**Integrated – HDS is linked to machine controllers and extracts downtime data.**

In this mode, production data input is collected in the same way as in automatic. However, the system also stores ALL stop codes from the associated PLC. In the event that the period (usually an hour) is below the trigger, then the data is stored in the HDS for later analysis. So when a particular hour is reviewed that is below the trigger and the operator inputs a reason, it is then possible to compare it with the PLC reason codes for that particular hour.



## HDS Sample Screen Captures

On the right are a few sample screen captures that include charts, graphs, and reports that management can use to make pertinent business decisions:



## Why Choose the Holistic Data System?

- We have over 20 years' experience in designing and implementing process and production improvement systems in a variety of industries.
- We have mastered the methods and techniques of variability reduction to provide sustainable results and increased profits to your bottom line.
- We have a proven track record with outstanding and sustainable results for our clients.
- The "payback" on the HDS Software System can be measured in months, but often provides positive cash flow from day one.
- The software is flexible; it can be deployed and integrated across several technologies and networks.
- Direct interface with PLC system (optional).
- We offer a money-back guarantee; **we put our money where our mouth is.**

## Testimonials

**The Holistic Data System has helped clients across a wide range of industries both domestically and internationally to achieve higher levels of output, increased efficiencies, and permanent improvements as a result. Our clients will attest to our commitment and the benefits of our manufacturing software. But don't take our word for it, here's what some users of the HDS have to say about us...**

"We have not just seen an improvement in performance but a complete change in culture and attitudes. We now want to replicate this in all of our beverage plants. This particular plant has paved the way!"  
*VP of Operations, Polar, Venezuela*

"At first, the operators were a little apprehensive, but once they realized that the HDS gave them the opportunity to provide feedback to management they embraced it! Within a few weeks we saw significantly higher performance."  
*Plant Manager, BAT Bangladesh*

"The data analysis capabilities of the HDS was a real eye opener because it showed us the magnitude of problems that we had suspected, but had no way to measure. Seeing the trends and patterns provided immediate benefits that made us more efficient and profitable."

*Production Supervisor, Bass Brewers UK*

"I was able to get a better handle on the line performance, by brand, by crew, and by shift so that I could develop better production schedules."

*Production Scheduler, BAT Malaysia*

"We always knew there was a ramp up time associated with maintenance and with brand change over, however the HDS gave us a way to monitor the ramp up, the down time, and the new steady state output level once running. This encouraged crews to focus more on the run ability and balance it with down time. The data analysis also provided excellent information on what we needed to focus on during the maintenance periods." *Maintenance Supervisor, Consumer Goods Chile*

## System Requirements

### **The minimum specification PC at each module (PC not provided under this agreement) is as follows:**

Acceptable workstation (i.e., at a module)  
– PIII 700MHZ, 128 MB Ram, 1GB hard disk space. This spec of PC can only run HDS like a workstation. Ideal workstation (i.e., at a module) – P4 or athlon 1.7 or higher and 256 MB ram.

If a single module is installed and no server (in order to cut costs), a P4, 1.7 GHZ, 512 MB ram, and 10 GB of HD space is recommended. This would allow a Personal Oracle/SQL Server and HDS workstation. Ideal Server: P4 2.4GHZ, 1GB ram, HD 80 GB.

Note: The PCs and servers associated with the HDS must be installed with the Microsoft XP or 2000 operating system with the full service packs installed. The Oracle or SQL server must be installed before HMC installs HDS applications.

### **For More Information**

**Please see our website:  
[www.holisticconsulting.org](http://www.holisticconsulting.org) for more detailed information on the Holistic Data System as well as our consulting services, success stories, and career opportunities.**

**Holistic Manufacturing Consulting  
Corporate Headquarters  
600 Tatum Court  
Alpharetta, GA 30022  
Phone: 1.770.667.0406  
1.800.545.6044  
Fax: 1.770.667.5163  
[info@holisticconsulting.org](mailto:info@holisticconsulting.org)**